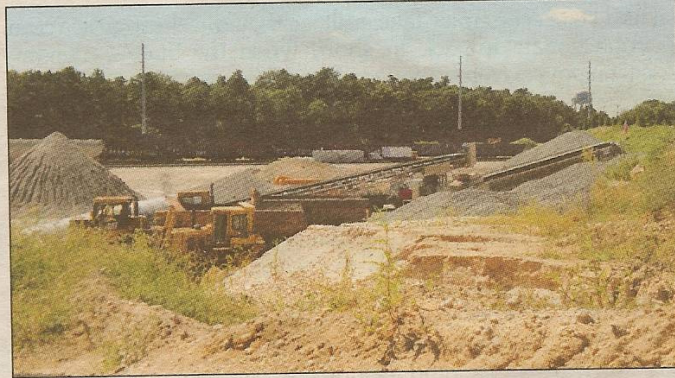


## Legislator Muratore Tours Brookhaven Rail Terminal



Legislator Tom Muratore (R, Ronkonkoma) was recently invited to tour the Brookhaven Rail Terminal, located in Yaphank on a large industrial site adjacent to Exit 66 of the Long Island Expressway. This private-sector transporter of goods is a multi-modal rail freight facility whose goal is to preserve the area's infrastructure by reducing the number of trucks on roads and highways.

"Brookhaven Rail Terminal is a neighbor-friendly facility focused on more efficient methods of transport. Railway use is cost effective, as it reduces the expense of diesel fuel and tolls, plus it reduces traffic congestion," stated Legislator Muratore. "I am grateful to have toured the facility to learn more about this company's proactive method of transportation."

September 7, 2012